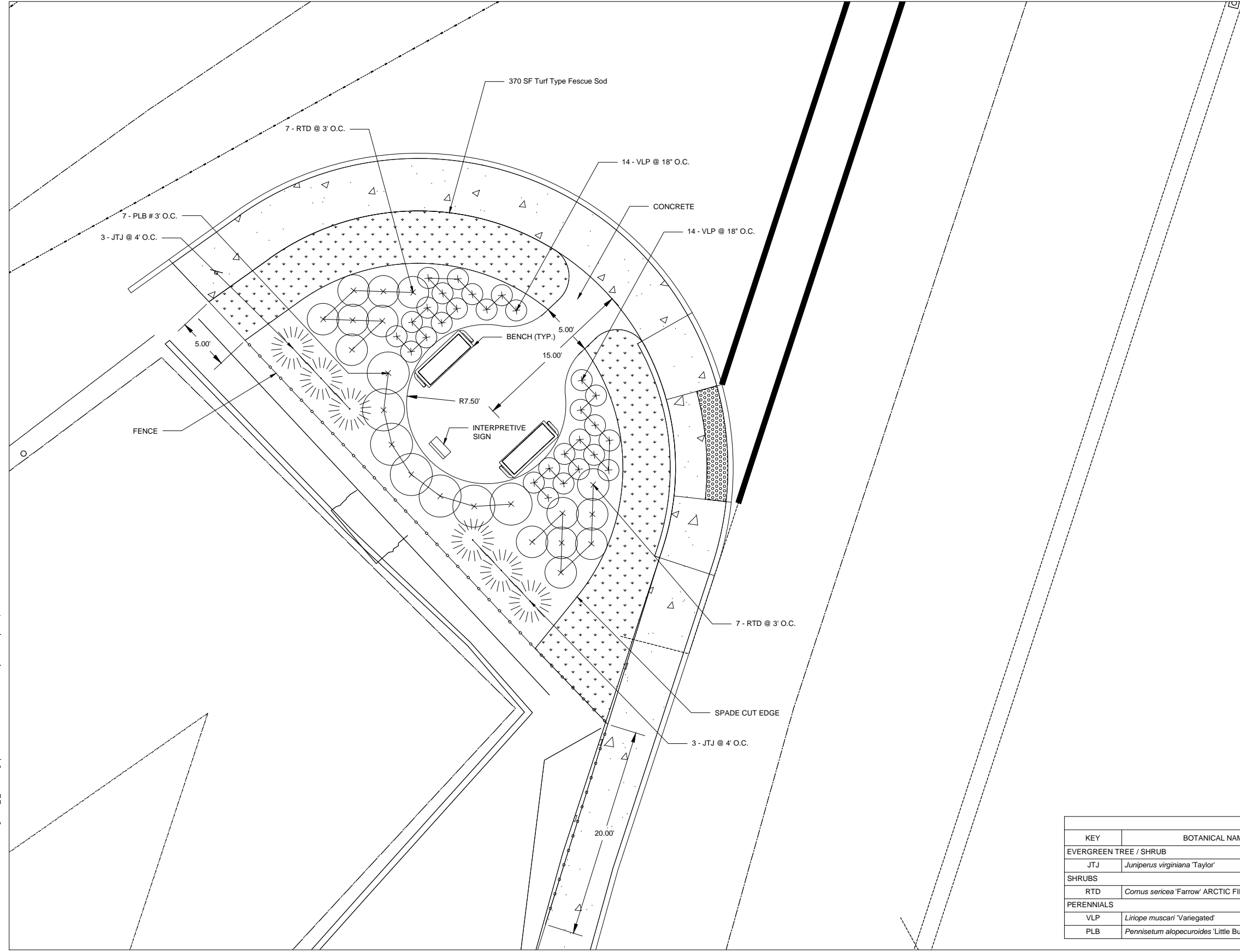



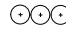

P:\J1707 - Arthur Ashe Park\11-Cadd\current\design\1707_LP-1.0.dwg | Last saved 4/6/2017 2:06:26 PM by Tschmitt | Last plotted 4/6/2017 2:12:22 PM



LANDSCAPE NOTES:

1. UNLESS OTHERWISE NOTED, ALL NATURAL VEGETATION SHALL BE MAINTAINED WHERE IT DOES NOT INTERFERE WITH CONSTRUCTION. PROTECT EXISTING UTILITIES, STRUCTURES OR VEGETATION FROM DAMAGE. INSTALLER SHALL MAINTAIN AND SECURE THE PROJECT SITE TO PROTECT THE PUBLIC FROM INJURY DUE TO WORK AND RELATED MATERIAL.
2. UNDERGROUND FACILITIES, STRUCTURES AND UTILITIES MUST BE CONSIDERED APPROXIMATE ONLY. THERE MAY BE OTHERS NOT PRESENTLY KNOWN OR SHOWN. INSTALLER SHALL BE RESPONSIBLE TO DETERMINE AND VERIFY THE EXISTENCE OF AND EXACT LOCATION OF ALL UTILITIES.
3. INSTALLER IS ADVISED TO STUDY THE PLANS AND VISIT THE SITE TO BECOME FAMILIAR WITH THE EXISTING CONDITIONS. REPORT ANY DISCREPANCIES IMMEDIATELY TO THE OWNER'S REPRESENTATIVE.
4. INSTALLER SHALL STAKE THE LOCATIONS OF ALL PROPOSED PLANT MATERIAL AND PLANTING BED EDGES FOR APPROVAL BY THE OWNER'S REPRESENTATIVE PRIOR TO INSTALLATION.
5. INSTALLER SHALL STAKE AND BRACE TREES IMMEDIATELY FOLLOWING INSTALLATION ACCORDING TO PLANS.
6. ALL PLANTING BED EDGES SHALL BE SPADE CUT UNLESS OTHERWISE INDICATED.
7. INSTALLER TO SOD / SEED ALL AREAS DISTURBED DUE TO CONSTRUCTION ACTIVITIES.
8. ALL PLANT MATERIAL SHALL BE TAGGED OR OTHERWISE APPROVED BY THE OWNER'S REPRESENTATIVE. APPROVAL IN THE NURSERY DOES NOT INDICATE FINAL ACCEPTANCE.
9. ITEMS SHOWN ON THESE DRAWINGS TAKE PRECEDENCE OVER THE MATERIAL LIST. INSTALLER SHALL VERIFY ALL QUANTITIES AND CONDITIONS PRIOR TO BIDDING AND IMPLEMENTATION OF THE PLAN. NO SUBSTITUTIONS OF TYPES OR SIZE OF PLANT MATERIAL WILL BE ACCEPTED WITHOUT WRITTEN APPROVAL BY OWNER'S REPRESENTATIVE.
10. ALL PLANT MATERIAL SHALL CONFORM TO UPPER RANGE LIMITS FOR CALIPER, HEIGHT AND ROOT BALL DIMENSIONS LISTED IN ANSI Z60.1-2014.

LEGEND:

-  EVERGREEN TREE
-  SHRUB / ORNAMENTAL GRASS
-  TURF-TYPE FESCUE SOD (BASE BID)

PLANT SCHEDULE						
KEY	BOTANICAL NAME	COMMON NAME	SIZE	CONDITION	TOTAL	REMARKS
EVERGREEN TREE / SHRUB						
JTJ	<i>Juniperus virginiana</i> 'Taylor'	Taylor Juniper	#7	CONT.	6	
SHRUBS						
RTD	<i>Cornus sericea</i> 'Farrow' ARCTIC FIRE	Arctic Fire Red Twig Dogwood	#3	CONT.	14	
PERENNIALS						
VLP	<i>Liriope muscari</i> 'Variegated'	Variegated Liriope	#1	CONT.	28	
PLB	<i>Pennisetum alopecuroides</i> 'Little Bunny'	Little Bunny Fountain Grass	#1	CONT.	7	

ARTHUR ASHE PARK

Concept #1

A Family of Flowers

MEET THE ASTER FAMILY (*Asteraceae*), one of the largest plant families in the world. A colorful and common resident of prairies, this family provides food and shelter for wildlife.

To find members of the Aster family, look for flowers shaped like daisies or sunflowers. Spring through fall you can find many blooming here at Nature Boardwalk at Lincoln Park Zoo!



Field Guide

LANCELEAF COREOPSIS

Look for lanceolate (lance-shaped) leaves and bright yellow flowers. This plant blooms from May to June. Look for yellow flowers and leaves.

PURPLE CONEFLOWER

Look for large purple flowers. The petals are pointed like a cone. The center is dark brown. It blooms from July to September.

HEATH ASTER

Look for large spikes of small white flowers. The flowers bloom from August to October.

Spring

Lanceleaf coreopsis (*Cornus lanceolata*) grows in small clumps. The lance-shaped leaves are at the base of the plant. This wildflower grows in small clumps and forms large colonies.



Summer

Like the name suggests, purple coneflower (*Echinacea purpurea*) has a large center cone. Sometimes centers form a hollow. The center cone is a reference to the spiny texture of the cone!

Blended Blossoms

Flowers in the Aster family are composite flowers. Composite flowers mean the one big flower is actually a cluster of many smaller flowers called florets.



Fall

Heath aster (*Aster erinoides*) may be late in bloom, but it's important for attracting bees and butterflies. This single flower plant can tolerate drought, heat, humidity, and late frosts.

Bench #1

